



DESCRIPTION:

PT62 float and thermostatic (internal air vent) steam traps are designed for draining condensate from all types of low and medium pressure steam heating and process equipment.

Typical applications include unit heaters, heat exchangers, driers and jacketed vessels.

Horizontal installation.

Available types:

PT 62 - with thermostatic air vent

PT 62S- SLR (with steam lock release)

PT 62C - with thermostatic air vent and SLR.

FEATURES:

Modulating discharge.

Discharges condensate at steam temperature.

Excellent air venting (by thermostatic air vent).

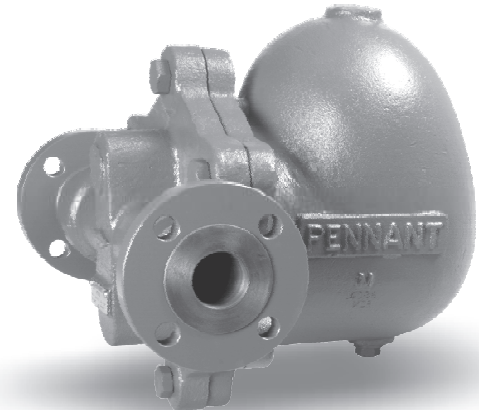
USE: Saturated and superheated steam.

SIZES: 1½", 2"

CONNECTIONS: Screwed (NPT) /
Flanged / SW

LIMITING CONDITIONS:

PMA: Max allowable pressure	228 psig
TMA: Max. allowable temperature	428 °F
PMO: Max. operating pressure	200 psig
TMO: Max. operating temperature	428 °F
Body shell design rating	285 psig, 800 °F



INSTALLATION:

Horizontal installation with flow from left to right

The trap should be installed horizontally below the drain point of the equipment in a position such that the float arm is in a horizontal plane and the float rises and falls vertically, with the flow direction as indicated on the cover.

The arrow on the nameplate should be pointing vertically upwards.

Max. differential pressure range:

PT62-65 : 65 psi

PT62-145: 145 psi

PT62-200: 200 psi

TRAP DISCHARGE CAPACITY IN lbs/hr

		DIFFERENTIAL PRESSURE (psi)																
MODEL	SIZE	7	15	21.5	28.5	42.5	57	65	70	85	100	115	128	145	157	170	185	200
PT62-65	1.½", 2"	6655	7205	7755	8340	9460	10560	11135	-----	-----	-----	-----	-----	-----	-----	-----	-----	-----
PT62-145	1.½", 2"	4920	5910	6270	6430	6820	7350	7525	7765	8150	8875	9700	10550	11275	-----	-----	-----	-----
PT62-200	1.½", 2"	4280	4995	5590	6115	6545	6820	6995	7160	7415	7975	8560	9085	9615	10100	10560	11000	11430

Recommended safety factor: steady condns. 1.5 - 2; fluctuating condns. 2-3

MATERIAL:

NO.	PART	MATERIAL	QTY.(Nos.)
1.	BODY	ASTM A216 Gr. WCB	01
2.	COVER	ASTM A216 Gr. WCB	01
3.	GASKET	NON ASBESTOS	01
4.	VALVE ASSY.	SS	01
5.	BALL FLOAT & LEVER ASSY.	SS	01
6.	AIR VENT	BIMETAL / SS	01
7.	BOLT	ASTM 193 Gr. B7	04
8.	DRAIN PLUG	CS	01
9.	BRACKET ASSY.	AISI 304	01
10.	SLR UNIT	AISI 304	01

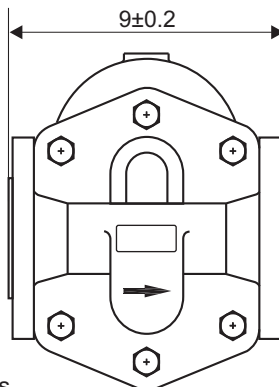
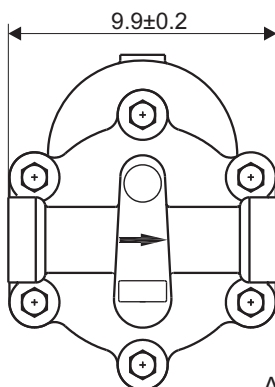
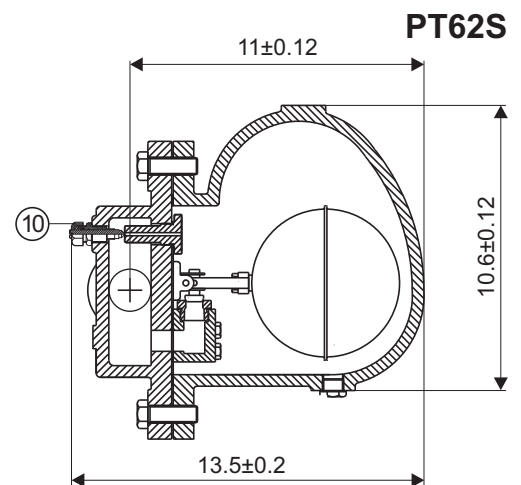
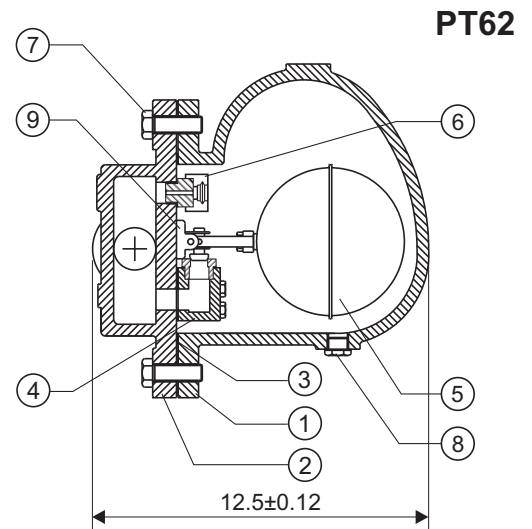
WEIGHT

Screwed/SW	Flanged
68 lbs	77 lbs

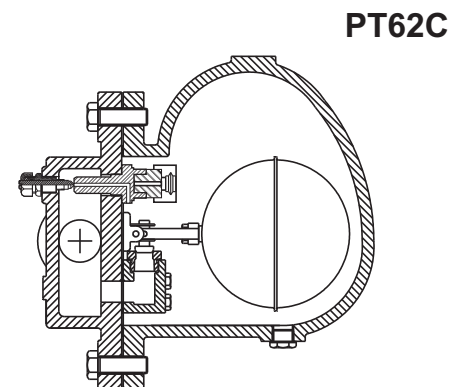
AVAILABLE SPARES:

Valve Seat, Ball Float & Lever Assy.,
 Air Vent, Gaskets.

OPTIONAL: SS Diaphragm Air Vent



All dimensions in inches



Local regulations may restrict the use of this product below the conditions quoted. Limiting conditions refer to standard connections only. In the interest of development and improvement of the product, we reserve the right to change the specifications without prior notice.